

Summary of Lake County of Victoria

Location:	Lat: 44° 41'	Lon: 78° 45'
Surface area:	786 Hectares	(1,942 Acres)
Mean depth:	8.5 metres	(28 feet)
Maximum depth:	19.2 metres	(63 feet)
Elevation:	270 metres	(885 feet)

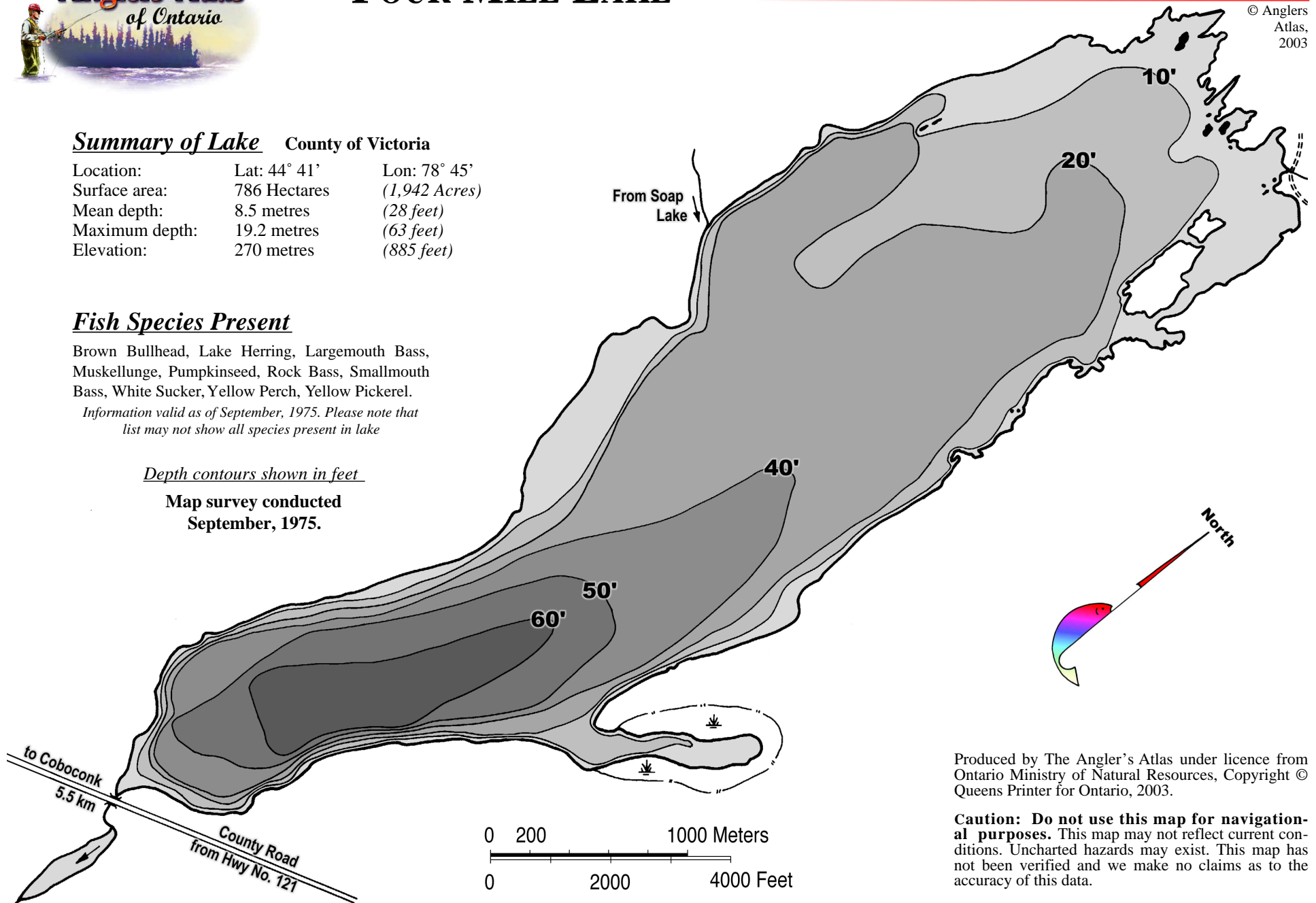
Fish Species Present

Brown Bullhead, Lake Herring, Largemouth Bass, Muskellunge, Pumpkinseed, Rock Bass, Smallmouth Bass, White Sucker, Yellow Perch, Yellow Pickerel.

Information valid as of September, 1975. Please note that list may not show all species present in lake

Depth contours shown in feet

**Map survey conducted
September, 1975.**



Produced by The Angler's Atlas under licence from Ontario Ministry of Natural Resources, Copyright © Queens Printer for Ontario, 2003.

Caution: Do not use this map for navigational purposes. This map may not reflect current conditions. Uncharted hazards may exist. This map has not been verified and we make no claims as to the accuracy of this data.